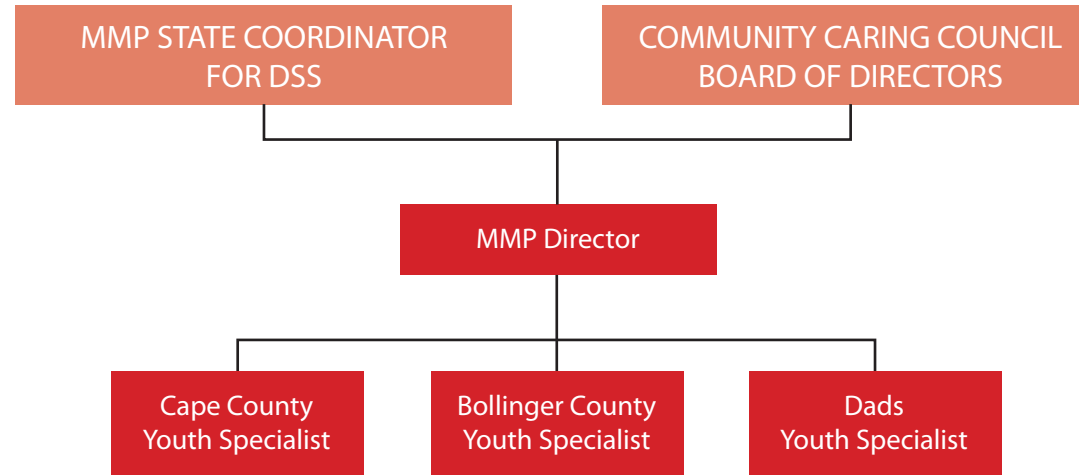


# MISSOURI MENTORING PARTNERSHIP CAPE GIRARDEAU & BOLLINGER COUNTIES

## Organizational Chart



### **DIRECTOR**

Responsible for program administration; supervises youth specialists; provides employment assistance to participants; assists during parenting activities.

### **YOUTH SPECIALIST**

Provides support to participants and mentors, conducts parenting and mentor training, develops and leads program activities.

